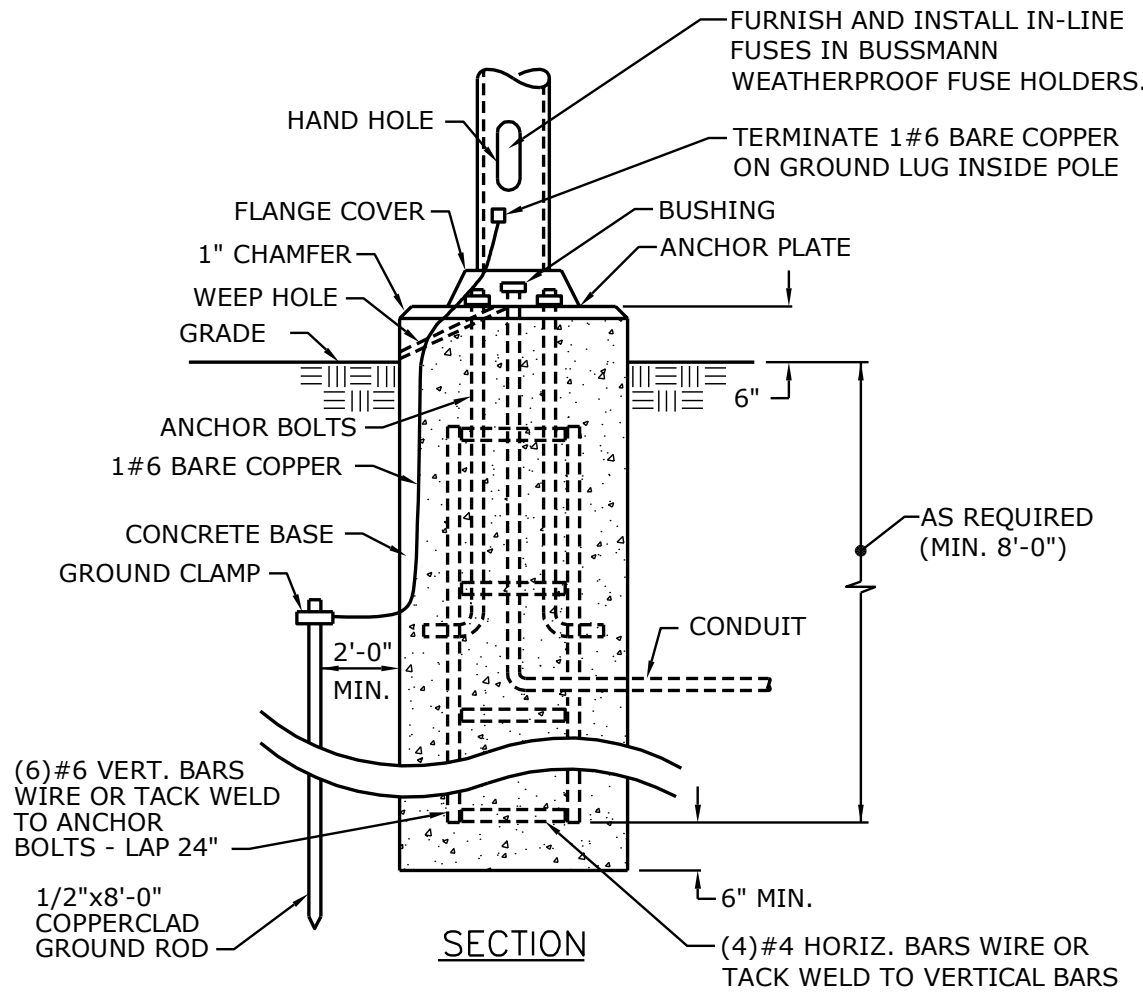
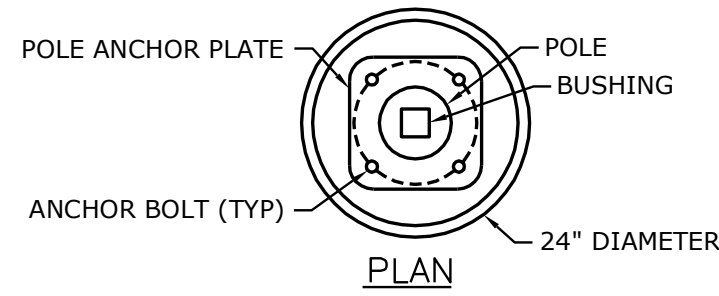


FIXTURE SCHEDULE

TYPE	DESCRIPTION	MOUNTING	LAMP	VOLTS	DIM	MANUFACTURER	V-A
A	LED AREA LIGHT, SLIM, LOW PROFILE, CAST ALUMINUM WITH INTEGRAL WEATHER-TIGHT LED DRIVER COMPARTMENT AND ALUM. HEATSINKS. MOUNTING HOUSING SHALL BE DIE CAST ALUM. AND INCLUDE LEAF/DEBRIS GUARD. BRONZE COLOR, NEMA PHOTOCCELL SOCKET & PHOTOCCELL.	POLE ADJ. ARM	LED 6 BAR 9600 LUMENS TOTAL INITIAL	240	N/A	PRE-APPROVED EQUAL	141 VA

NOTE 1: FURNISH UNIVERSAL MOUNTING FIXTURE ADAPTOR FOR MOUNTING IN EXISTING LIGHT POLE.
 NOTE 2: FURNISH NEW LIGHT POLE, GE MODEL RRTS40TA18D10.510GV. POLE SHALL BE ROUND, TAPERED SHAFT, STEEL CONSTRUCTION, 40FT, NOMINAL MOUNTING HEIGHT, 18 FT. DOUBLE TRUSS ARMS, 10" ROUND BOTTTOM, GALVANIZED FINISH. POLE SHALL BE FURNISHED WITH ANCHOR BOLTS, BOLT COVERS, HAND HOLE OPENING AND COVER PLATE.



POLE BASE NOT TO SCALE

627E2 X:\03\03156\0315627\Drawings AUTOCAD FILE LOCATION \ NAME:

KCATA 08-5006-39

smith&boucher
ENGINEERS
25501 west valley parkway, suite 200 olathe, ks 66061
p.913.345.2127 / 888.299.7540 f.913.345.0617

KCATA
BLUE RIDGE PARK & RIDE LIGHTING IMPROVEMENTS
DETAILS

DATE: 12-06-07
SCALE: AS NOTED S&B PROJ. NO: 0315627
DRAWN BY: S&B DRAWING NUMBER
CHECKED BY: RLM **E2**