

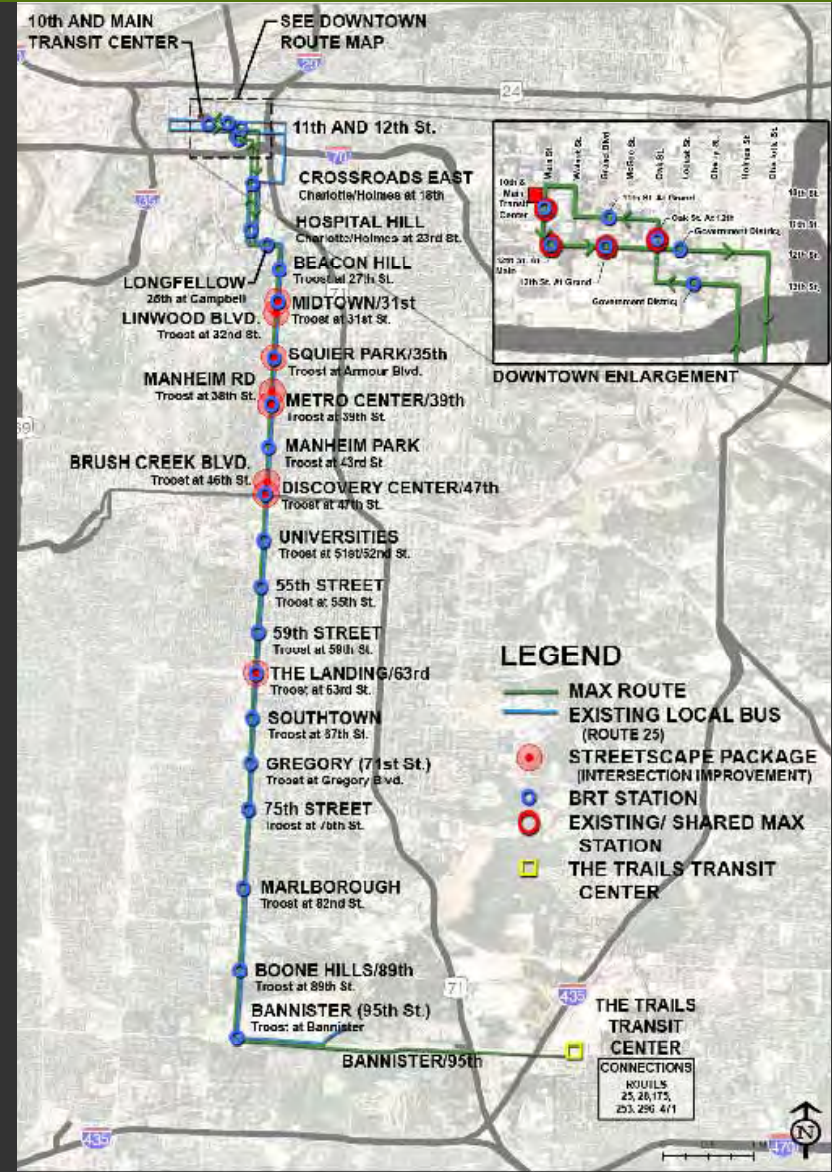
TROOST BRT STREETSCAPE



**Kansas City Board of Parks Commissioners
January 13, 2009**

metro area express

Troost BRT Stations and Route



Linwood Boulevard

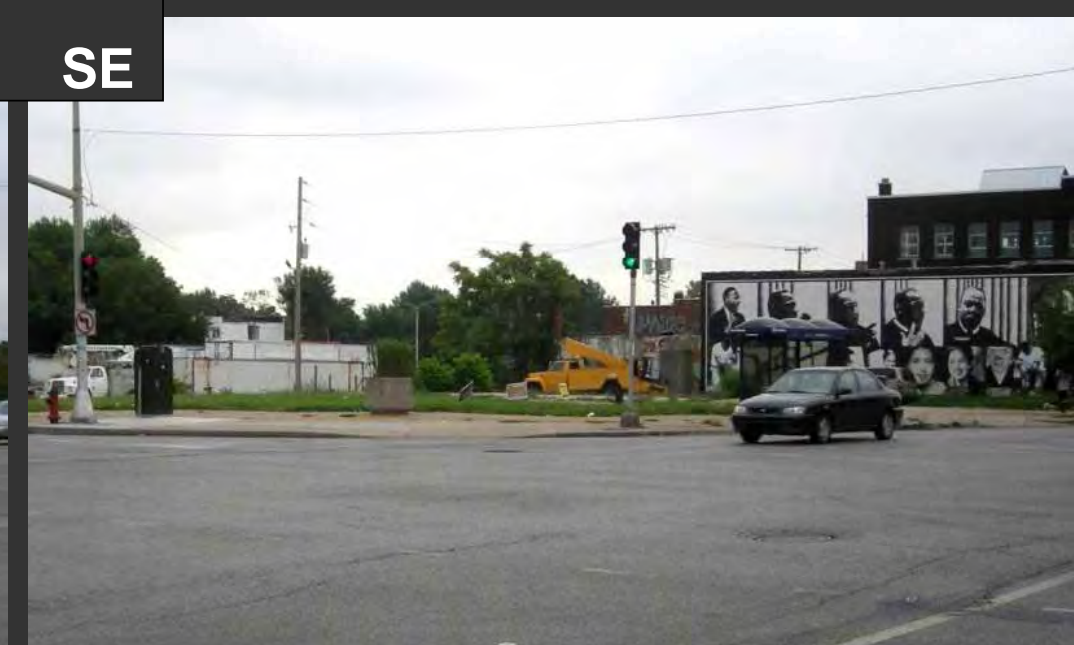
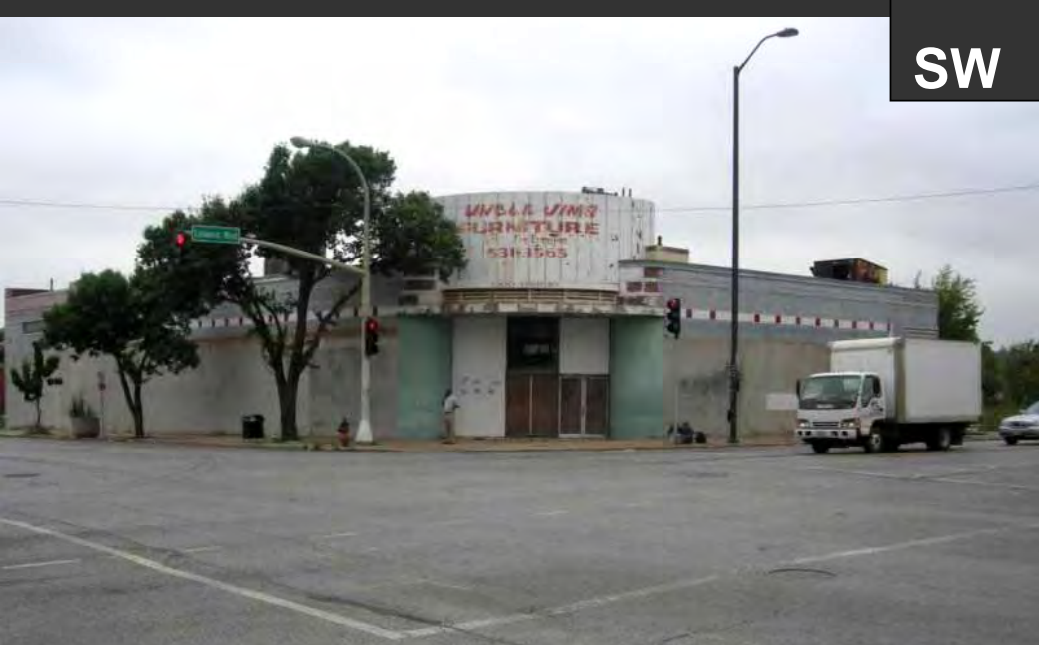


NW

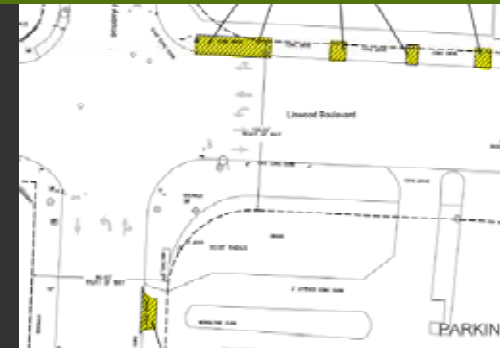
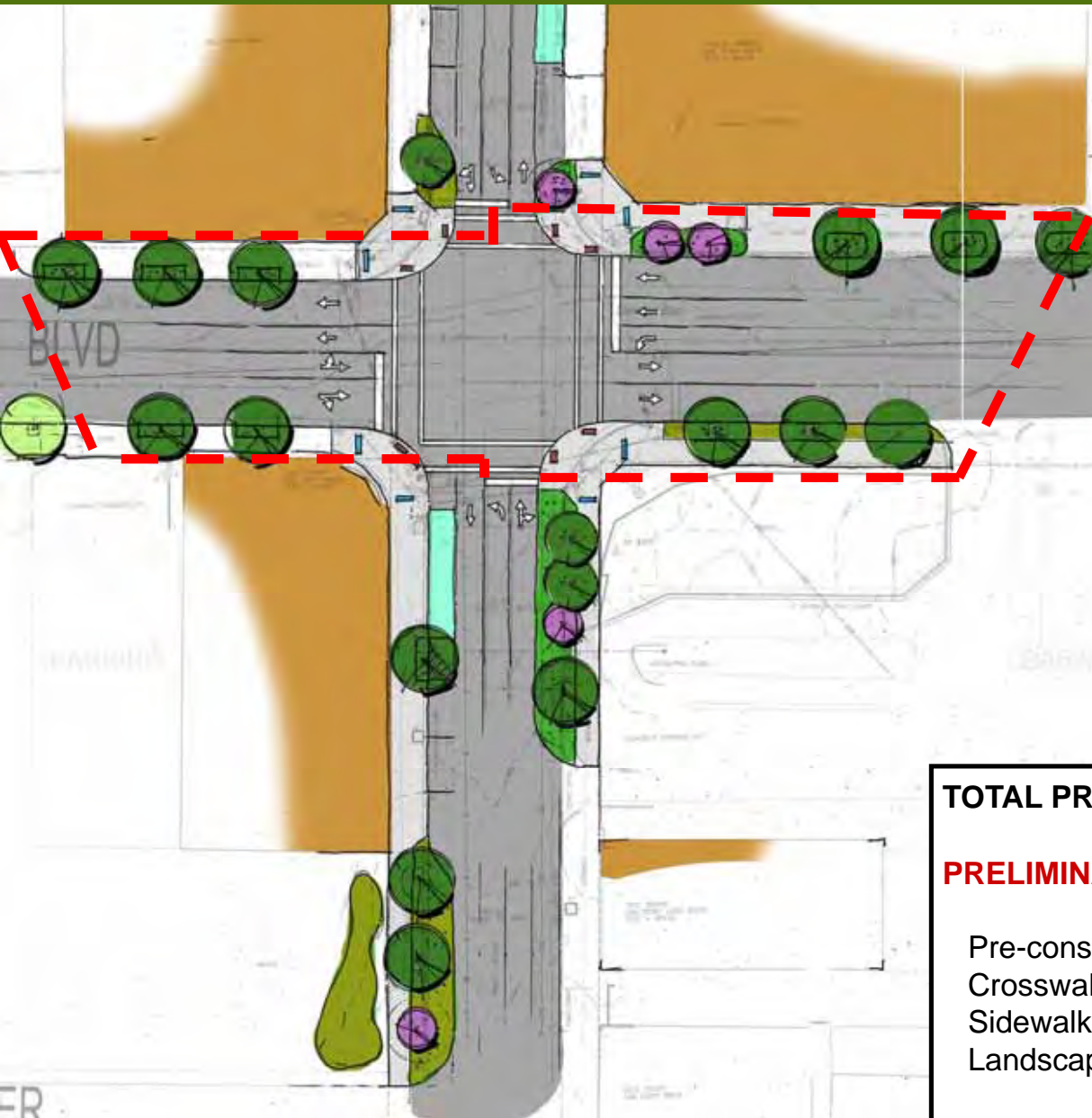
NE

SW

SE



Linwood Boulevard



- Metro stops relocated to far side
- Proposed drive closures
- Bumpouts w/ rain gardens
- Landscape planters and street trees
- Blue tile street names
- Sidewalks / curbs / ADA ramps /crosswalks

TOTAL PRELIMINARY COSTS AS SHOWN	\$426,212
PRELIMINARY COSTS WITHIN BLVD ROW	\$221,300
Pre-construction, utility relocates, traffic control	\$ 19,800
Crosswalk / Intersection	\$ 21,800
Sidewalks, curbs, ADA ramps, name plates	\$113,700
Landscape	\$ 66,000

Armour Boulevard

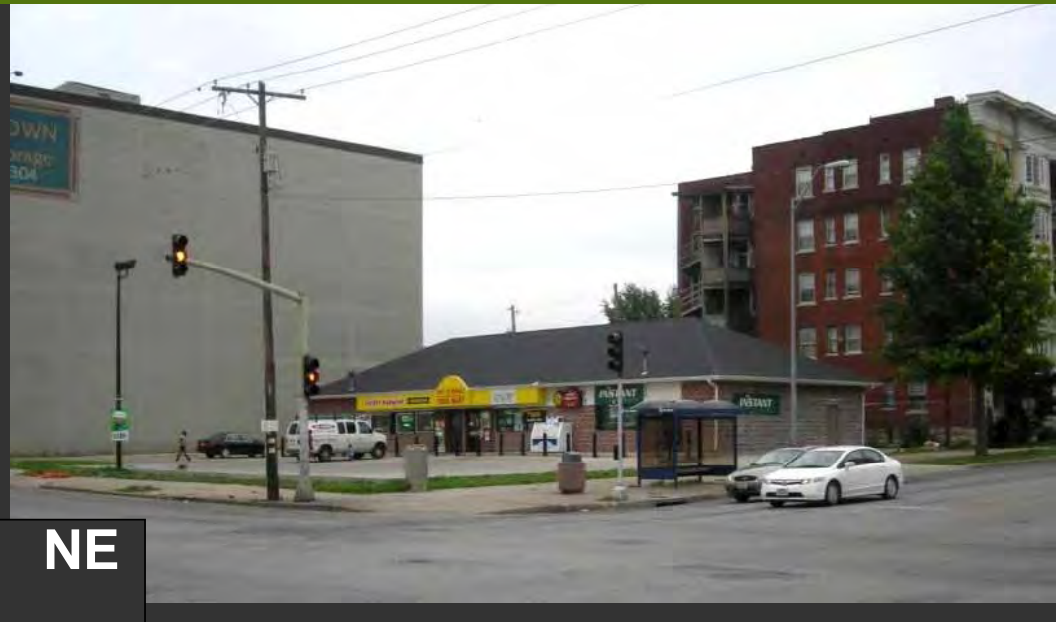


NW

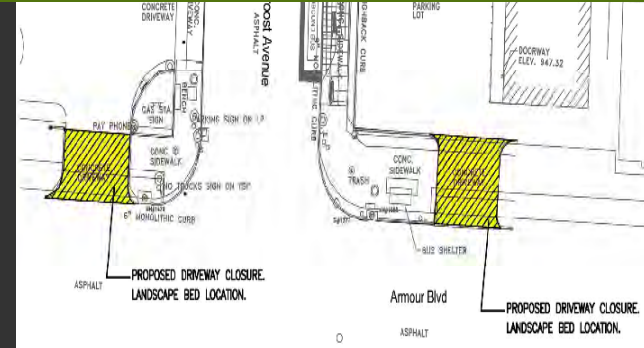
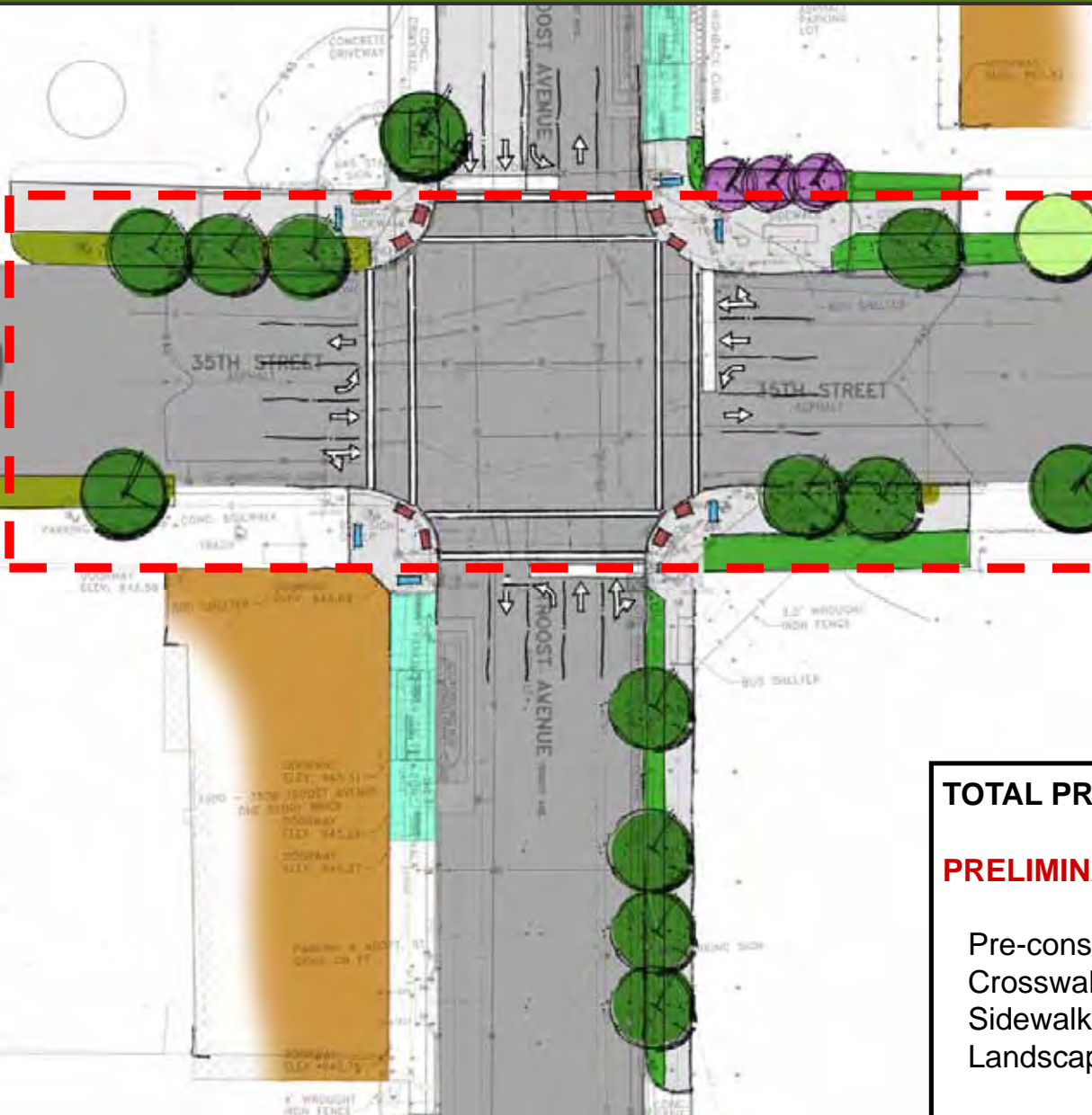
NE

SW

SE



Armour Boulevard



New BRT Stations

Proposed drive closures

Landscape planters / street trees

New green space back of sidewalk

Blue tile street names

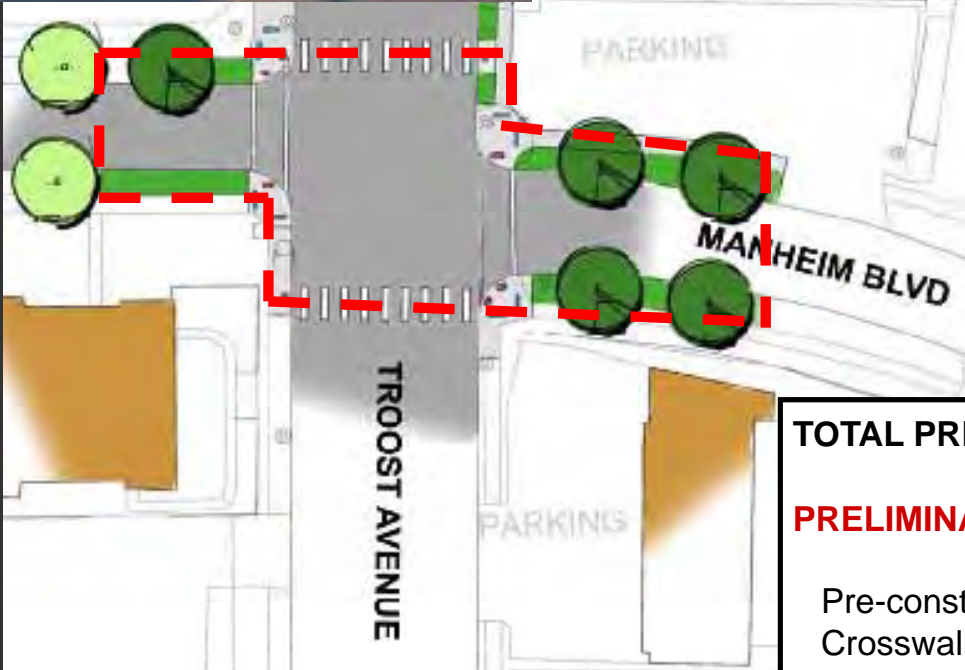
Sidewalks / curbs / ADA ramps / crosswalks

TOTAL PRELIMINARY COSTS AS SHOWN	\$249,128
PRELIMINARY COSTS WITHIN BLVD ROW	\$196,500
Pre-construction, utility relocates, traffic control	\$ 18,700
Crosswalk / Intersection	\$ 23,400
Sidewalks, curbs, ADA ramps, name plates	\$ 81,800
Landscape	\$ 72,600

Manheim Boulevard



NE



- Proposed drive closures
- New street trees in tree lawn
- Blue tile street names
- Sidewalks / curbs / ADA ramps / crosswalks

TOTAL PRELIMINARY COSTS AS SHOWN	\$83,570
PRELIMINARY COSTS WITHIN BLVD ROW	\$76,350
Pre-construction, utility relocates, traffic control	\$ 12,150
Crosswalk / Intersection	\$ 11,500
Sidewalks, curbs, ADA ramps, name plates	\$ 50,200
Landscape	\$ 2,500

Brush Creek Boulevard



NW

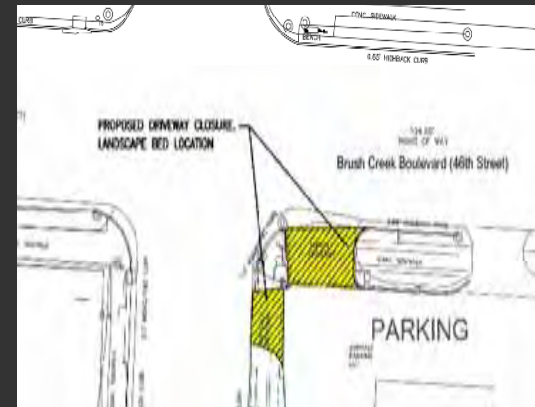
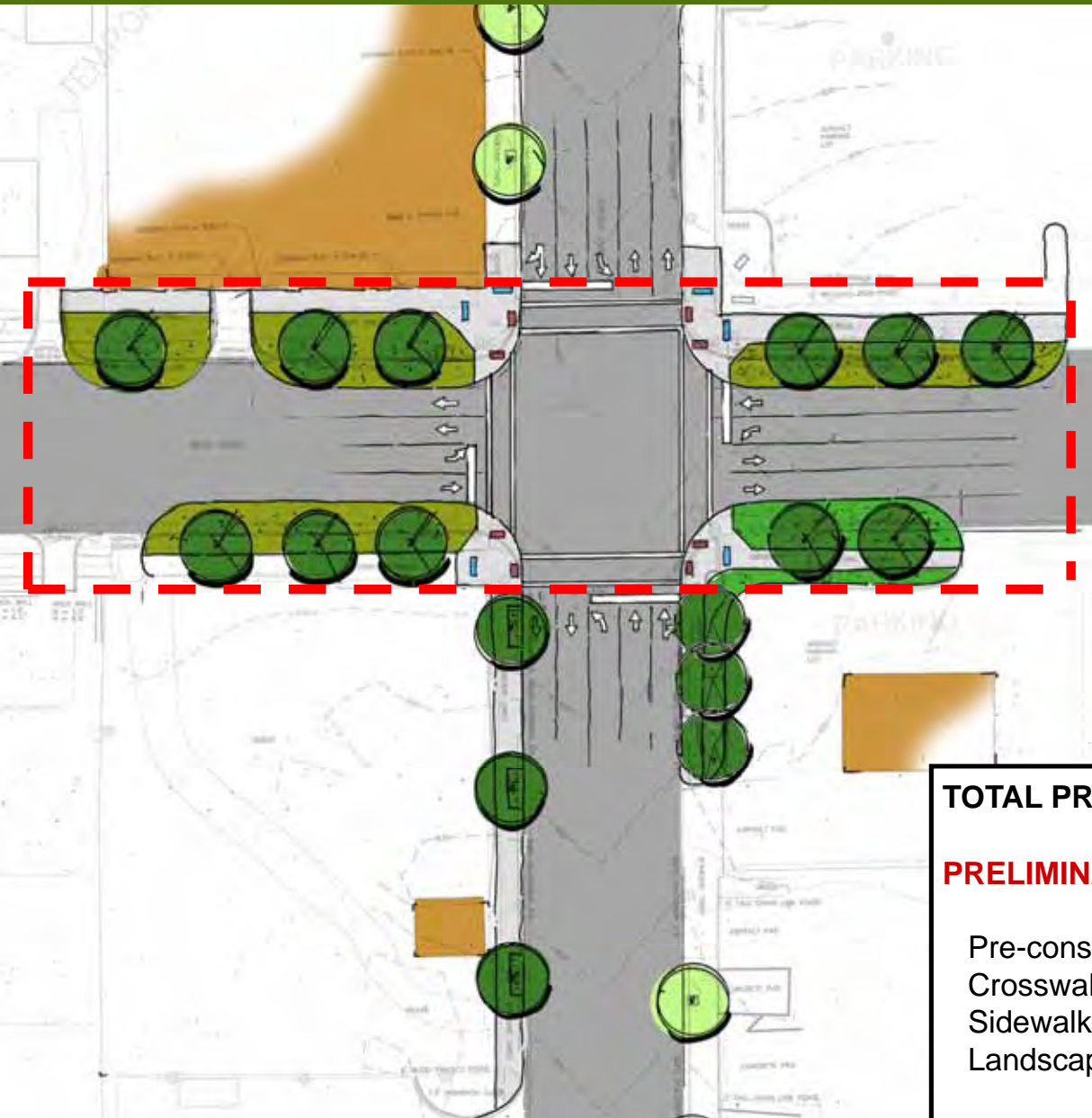
NE

SW

SE



Brush Creek Boulevard



- Proposed drive closures
- Bumpouts w/ rain gardens
- Landscape planters and street trees
- Blue tile street names
- Sidewalks / curbs / ADA ramps / crosswalks

TOTAL PRELIMINARY COSTS AS SHOWN	\$400,436
PRELIMINARY COSTS WITHIN BLVD ROW	\$356,400
Pre-construction, utility relocates, traffic control	\$ 18,000
Crosswalk / Intersection	\$ 22,600
Sidewalks, curbs, ADA ramps, name plates	\$106,000
Landscape / rain gardens	\$209,800

Emanuel Cleaver II Boulevard



NW

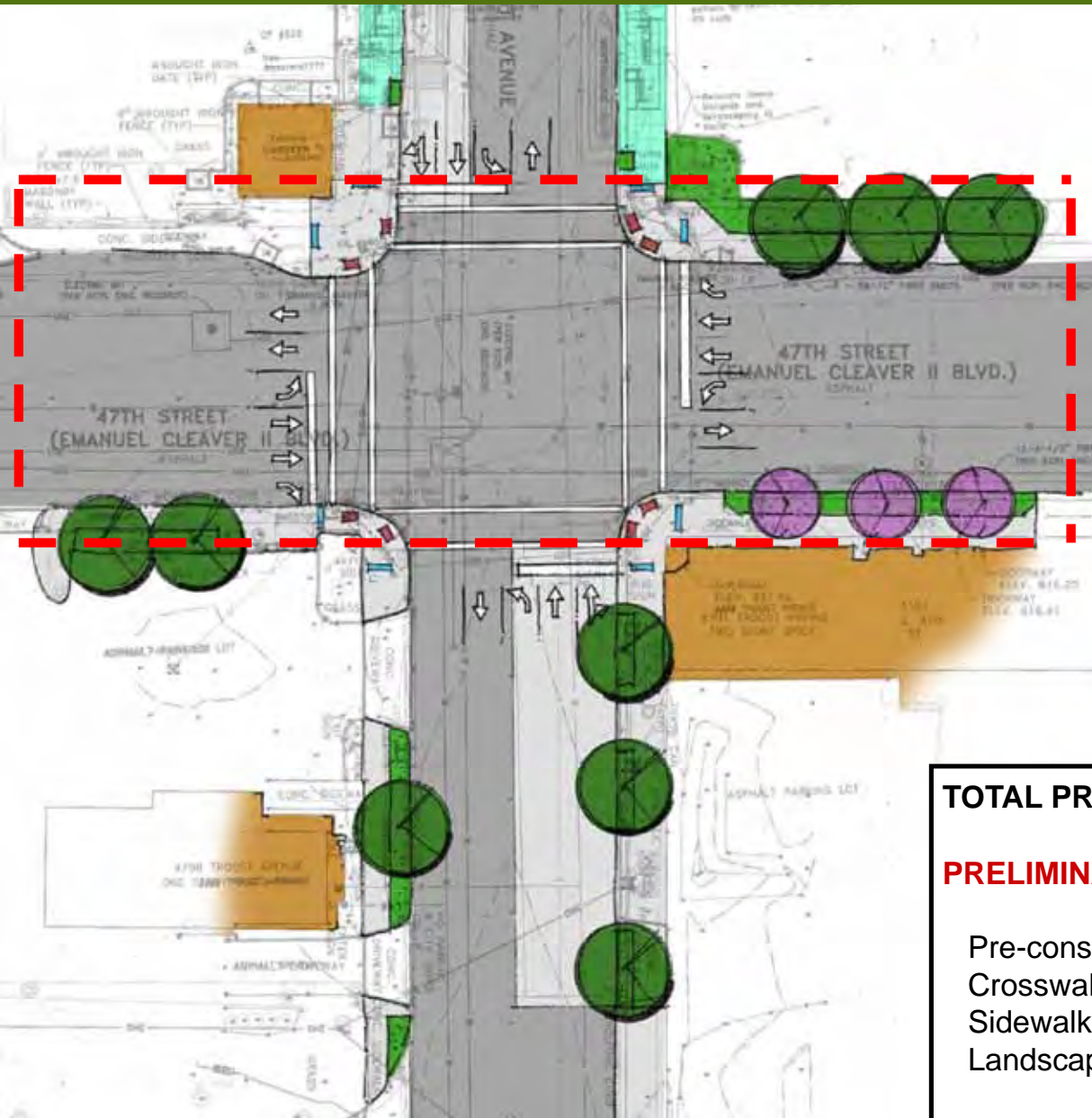
NE

SW

SE



Emanuel Cleaver II Boulevard



New BRT Stations

Street trees in large landscape beds

Additional green space back of sidewalk

Blue tile street names

Sidewalks / curbs / ADA ramps / crosswalks

New benches and trash receptacles

TOTAL PRELIMINARY COSTS AS SHOWN \$231,797

PRELIMINARY COSTS WITHIN BLVD ROW \$176,000

Pre-construction, utility relocates, traffic control	\$ 18,500
Crosswalk / Intersection	\$ 24,000
Sidewalks, curbs, ADA ramps, name plates, benches	\$ 96,500
Landscape	\$ 37,000

Preliminary Costs

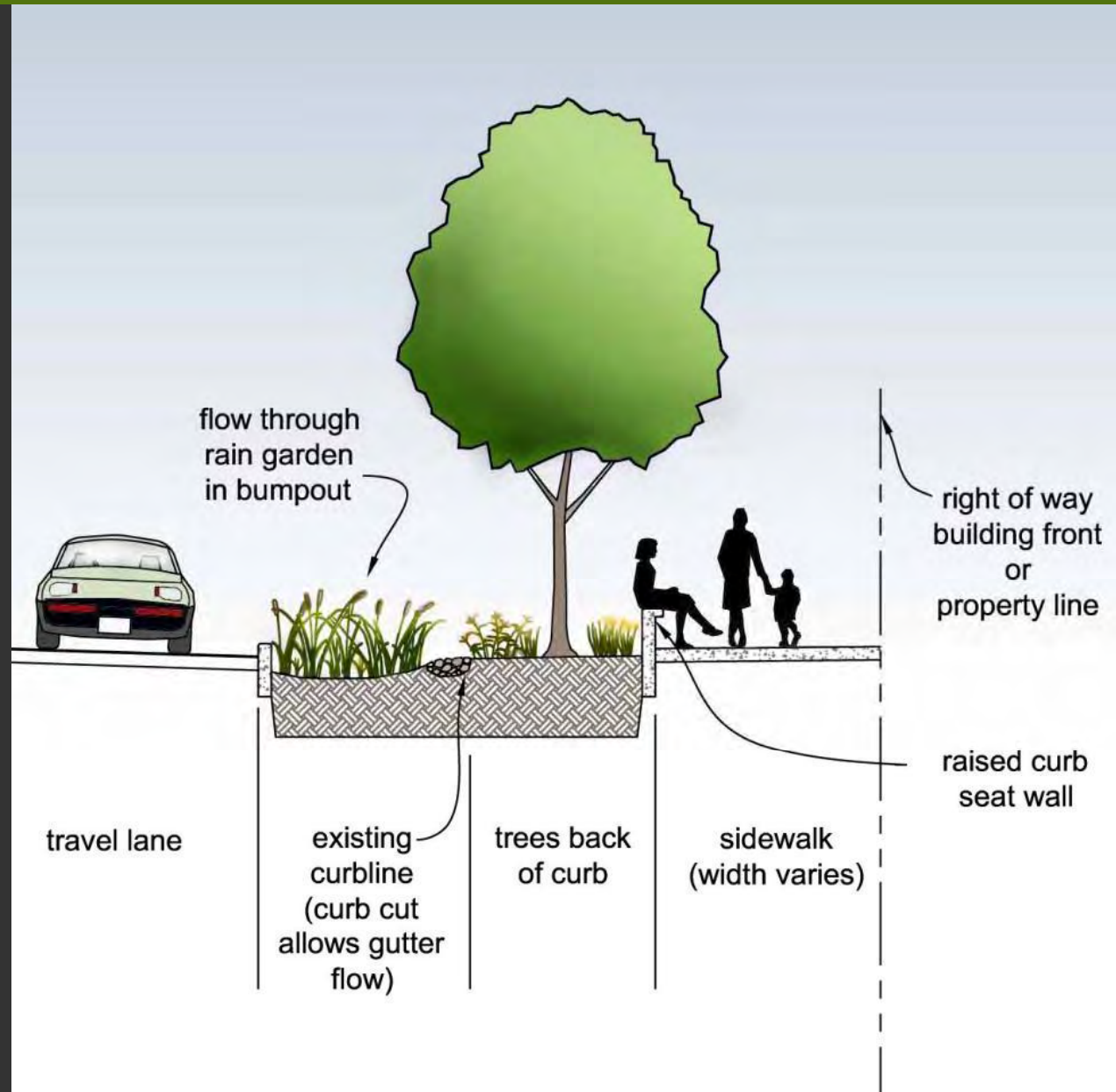
Total BRT Budget	\$ 30 M
Total BRT Construction Budget	\$ 16 M
Total Streetscape Budget	\$ 1.8 M
KCPL Contribution	\$ 1.2 M
PIAC Funding	\$ 600 K

	Total within Blvd ROW	Intersection Total
Linwood Blvd.	\$221,300	\$426,212
Armour Blvd.	\$196,500	\$249,128
Manheim Blvd.	\$ 76,350	\$ 83,570
Brush Creek Blvd.	\$356,400	\$400,436
Emanuel Cleaver II Blvd.	<u>\$176,000</u>	<u>\$231,797</u>
GRAND TOTAL - Blvds.	\$1,026,550	\$1,391,143
31st Street		\$192,202
31st to Linwood		\$ 98,882
39th Street		\$ 93,082
46th to 47th		\$136,422
63rd Street		<u>\$116,886</u>
GRAND TOTAL – <u>Non</u> Blvds.		\$637,474
TOTAL STREETScape PROJECT COSTS w/15% Contingency		\$2,028,617

Flow – through Rain Gardens

Flow - through rain garden in bumpout designed to collect runoff from road and sidewalk.

Trees planted back of curb at higher soil level.



Tree Palette



Zelkova



Patriot Elm



Frontier Elm



Amur Maple



Japanese Lilac



Swamp White Oak



Hedge Maple



Black Gum



Honey Locust



Ginkgo

Rain Garden Palette



Native and Ornamental Grasses and Rushes



Native and Ornamental Perennials and Groundcovers